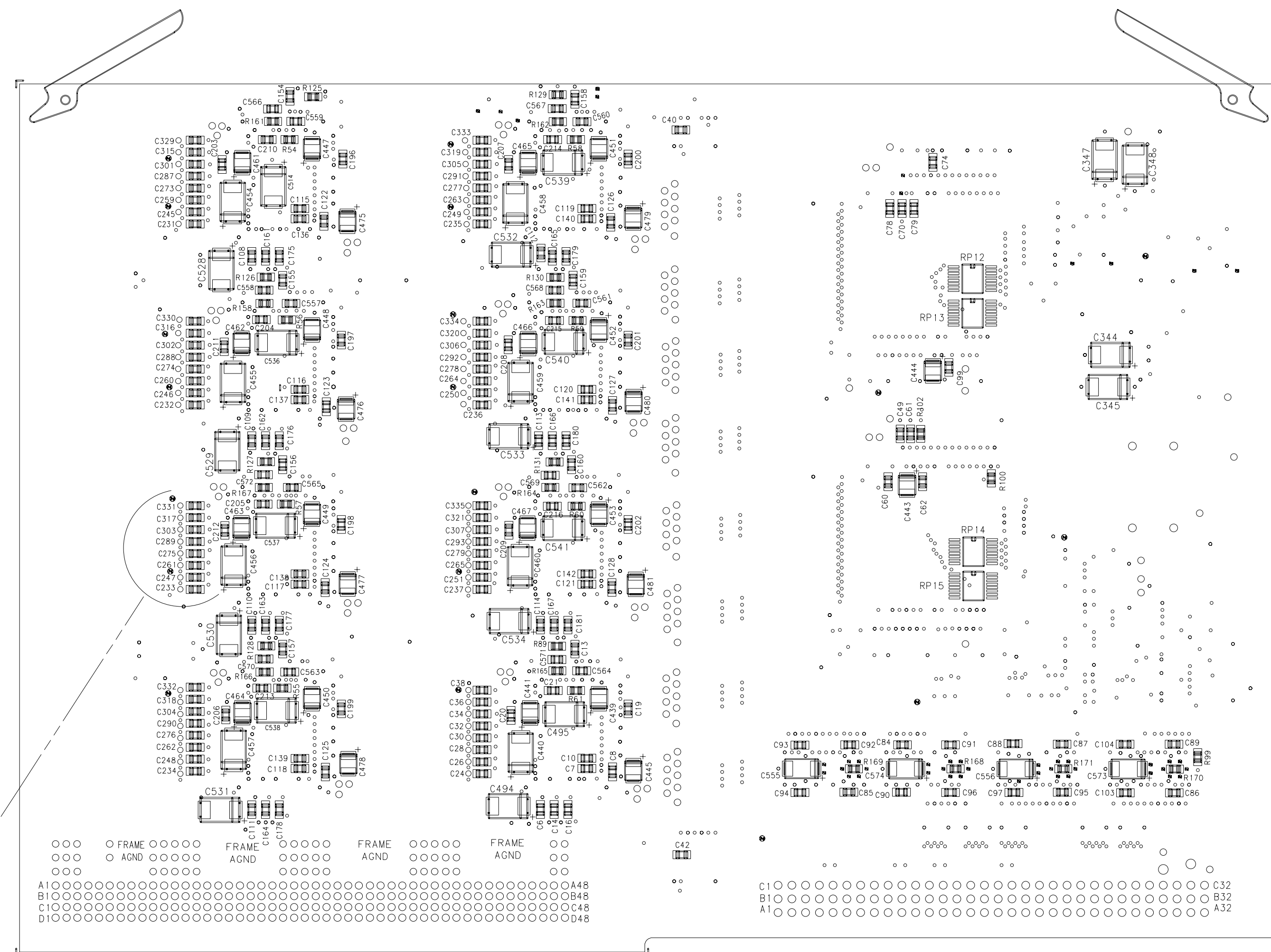
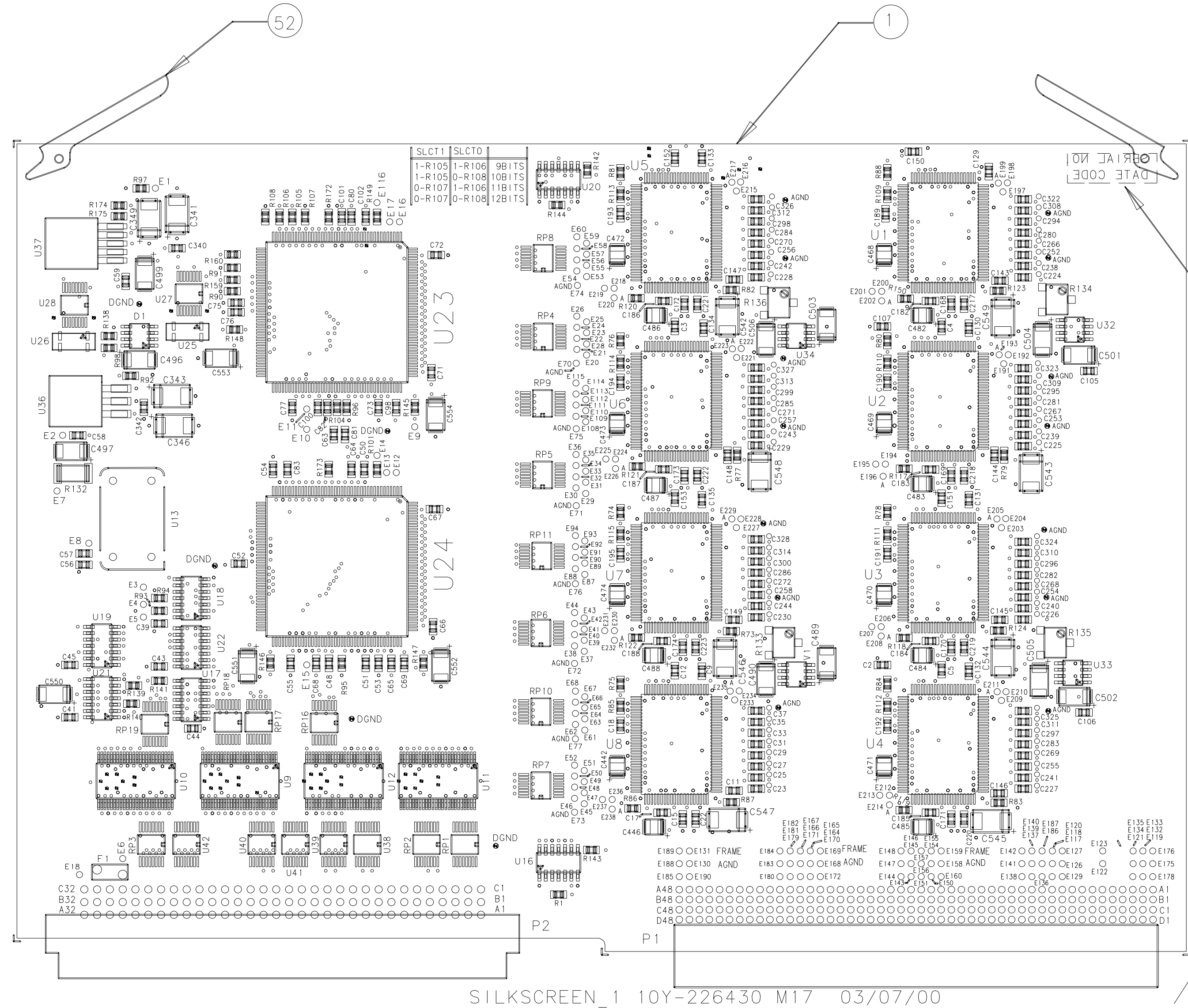
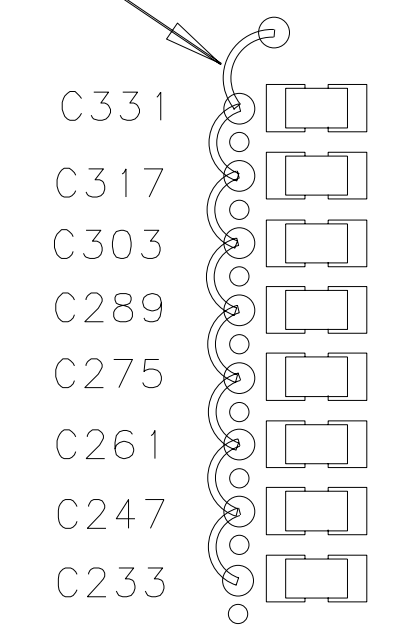


ITEM	PART NO.	QTY.	DESCRIPTION
1	10Y-226430 D03	1	P.C.DETAIL
2	10Y-226430 D01	REF	SCHEMATIC



ADD JUMPERS PER ASSEMBLY INSTRUCTIONS 3-C. (SEE SHEET 1)



DETAIL A  
TYPICAL 8 PLACES

NOTES:

- ASSEMBLE AND SOLDER PER IPC-6012, CLASS II.
- MARK APPROXIMATELY AS SHOWN WITH CONTRASTING COLOR USING 1/8 INCH HIGH CHARACTERS. (COVER WITH CONFORMAL COAT)
- ASSEMBLE AND SOLDER PER IPC-6012, CLASS II.
- ASSEMBLE AND SOLDER PER IPC-6012, CLASS II.

E	ADDED CARD EJECTORS	6/22/00	GS		
B	REDESIGNED	3-7-00	G.S.		
A	REDESIGNED	11-9-99	G.S.		
		ORIGINAL ISSUE			
REVISION LETTER	CLASS REVIEW	REVISIONS	DATE	CHANGED BY	CHECKED BY
<p>LOS ALAMOS</p> <p>LOS ALAMOS NATIONAL LABORATORY</p> <p>LOS ALAMOS, NEW MEXICO 87545</p>			<p>CLASSIFICATION OF DRAWING: UNCL</p> <p>PART: UNCL TITLE BLOCK: UNCL</p> <p>TITLE</p> <p>CROC</p> <p>CATHODE READOUT</p> <p>ASSEMBLY</p>		
ORIGINATED	M. CAFFERTY	4/26/99	NIS-4		
DRAWN	G.R.	4/26/99	NIS-4	.X= +/-	0.XX= +/-
CHECKED				0.X= +/-	0.XXX= +/-
PROJ. ENGR.					FINISH= +/-
APPROVED				SCALE	TOTAL SHEETS
RELEASED				2/1	10F2
			DRAWING NO.	SHEET NO.	
			10Y-226430	D2-A	