

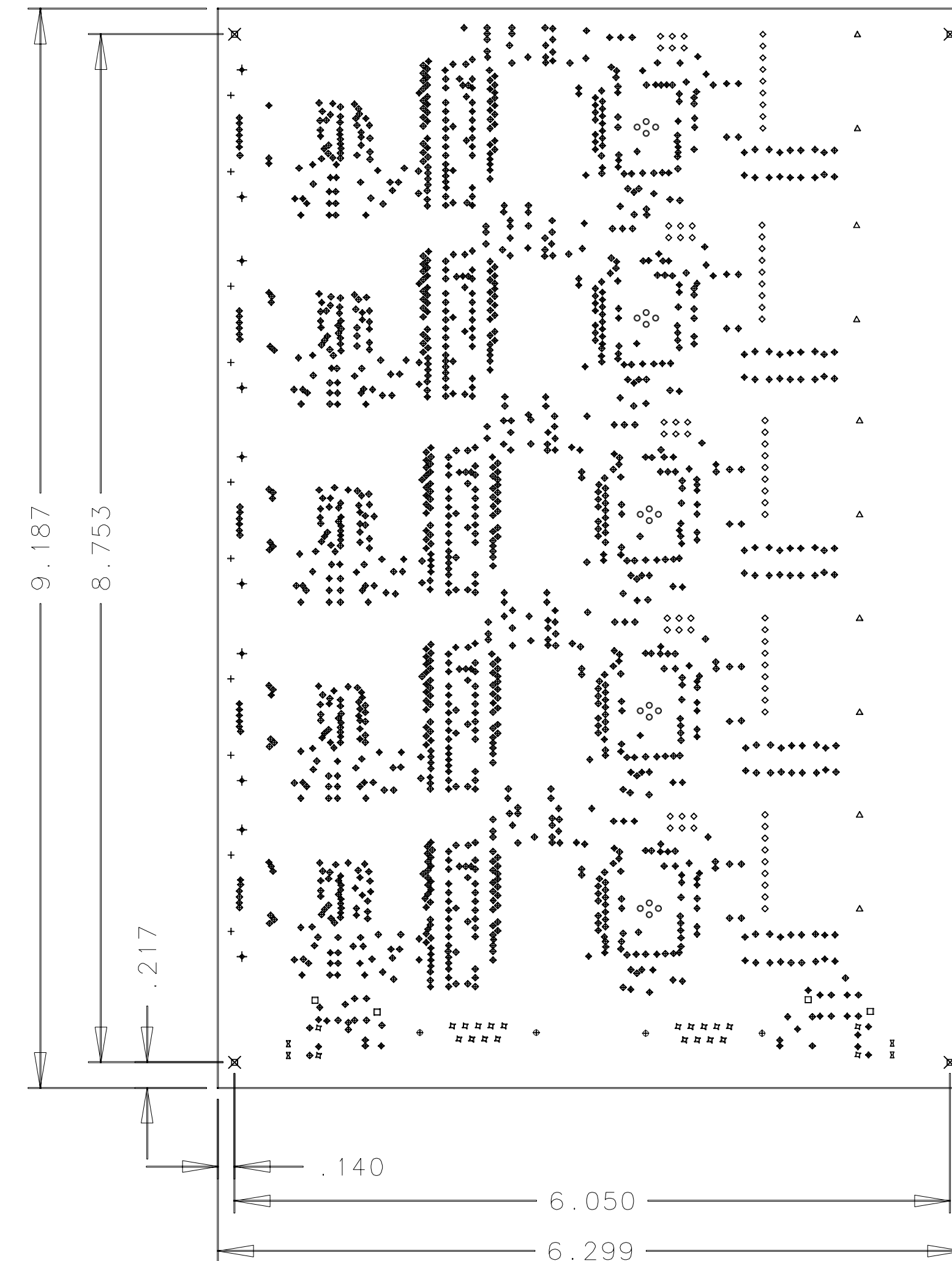
ITEM	PART NO.	QTY.	DESCRIPTION
1	10Y-226430 M1 - M10	REF	ARTWORK

NOTES:

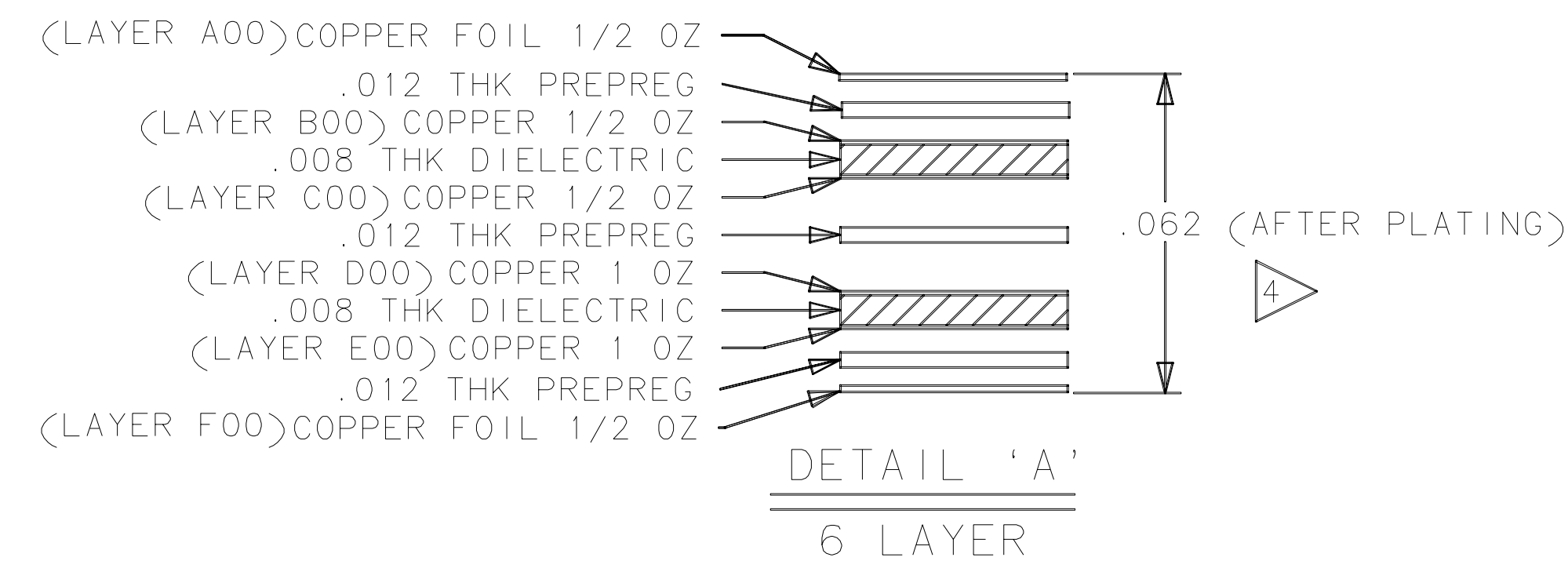
FABRICATE PRINTED CIRCUIT BOARDS TO THE LATEST VERSION OF IPC-4101 WITH THE FOLLOWING EXCEPTIONS:

- ARTWORK DATA, SEE ITEM 1
- MATERIAL: POLYIMIDE PLASTIC SHEET, LAMINATED COPPER CLAD, TYPE G1, GRADE B, CLASS 2 PER MIL-S-13949/10. GLASS CLOTH (B STAGE) RESIN PREIMPREGNATED TYPE PGI PER MIL-S-13949/13.
- DIELECTRIC LAYER THICKNESS: FINISHED BOARDS SHALL HAVE A MIN. OF 0.0035 IN. OF DIELECTRIC MATERIAL BETWEEN CONSECUTIVE CONDUCTOR LAYERS.
- COPPER PLATING: ELECTRODEPOSITED COPPER PLATING SHALL BE PER MIL-C-14550. PLATED HOLES SHALL BE PLATED TO 1 OZ WITH A MIN. THICKNESS OF 0.0012 IN.
- TIN LEAD PLATING PER MIL-P-81728A, .0003 INCH MIN. THICKNESS.
- ANNULAR RING: A MIN. ANNULAR RING OF 0.001 IN. IS ALLOWED ON EXTERNAL LAYERS AND 0.002 IN. ON INTERNAL LAYERS.
- ETCHBACK: THE MIN. ETCHBACK ALLOWED IS 0.0002 IN. AND THE MAX. IS 0.0012 IN.
- CONDUCTOR WIDTH AND SPACING: THE MIN. ALLOWABLE CONDUCTOR WIDTH IS 0.007 IN. THE MIN. ALLOWABLE SPACING BETWEEN CONDUCTORS AND LANDS IS 0.010 IN. THE MIN. SPACING BETWEEN CONDUCTORS AND LANDS TO THE EDGE OF THE BOARD IS 0.020 IN. ON LAYER A AND 0.050 IN. ON THE FAR SIDE.
- BOW AND TWIST: THE MAX. ALLOWABLE BOW AND TWIST SHALL BE 1.0%.
- QUALITY ASSURANCE: ALL BOARDS WILL BE SUBMITTED FOR GROUP A TESTING PER MIL-P-55110. ELECTRICAL TESTING FOR CIRCUIT CONTINUITY AND SHORTS IS REQUIRED. CERTIFICATE OF COMPLIANCE, GROUP A TEST DATA, AND TEST COUPONS (PROCESSED AND UNPROCESSED) ARE DELIVERABLE ITEMS.

11 100 OHM IMPEDANCE MICROSTRIP TRACES TO BE WITHIN +/- 2%.
VENDOR MAY CHANGE STACKUP TO MAINTAIN REQUIRED IMPEDANCES.



DRILL SYMBOL	DRILL SIZE	COUNT	PLATED
⊕	0.012	1502	YES
○	0.02	20	YES
□	0.032	4	YES
◇	0.04	75	YES
⊞	0.042	4	YES
⊞	0.045	22	YES
△	0.07	10	YES
+	0.079	10	NO
×	0.106	4	NO
⊕	0.11	10	NO
⊕	0.12	4	NO



100 OHM IMPEDANCE BETWEEN LAYERS 1(A) & 3(C)
(.007 WIDE TRACE ON LAYER 1 & GND PLANE ON LAYER 3)

REVISION LETTER	CLASS REVIEW	REVISIONS	DATE	CHANGED BY	CHECKED BY	APPROVED BY
A		REWORK BOARD	7/18/00	G.S.		
		ORIGINAL ISSUE				
CLASSIFICATION OF DRAWING: UNCL						
PART: UNCL TITLE BLOCK: UNCL						
TITLE: CLINK_RX CHANNEL LINK DETAIL						
LOS ALAMOS NATIONAL LABORATORY LOS ALAMOS, NEW MEXICO 87545						
ORIGINATED	SIGNATURE	DATE	GROUP			
	M. ECHAVE	01-04-00	NIS-4			
DRAWN	G. SAEWERT	01-04-00	NIS-4	.X= +/- .XX= +/- ANGULAR= +/-		
CHECKED				0.X= +/- 0.XXX= +/- FINISH= +/-		
PROJ. ENGR.						
APPROVED				SCALE	TOTAL SHEETS	DRAWING NO.
RELEASED				2/1		10Y-226430 DD12