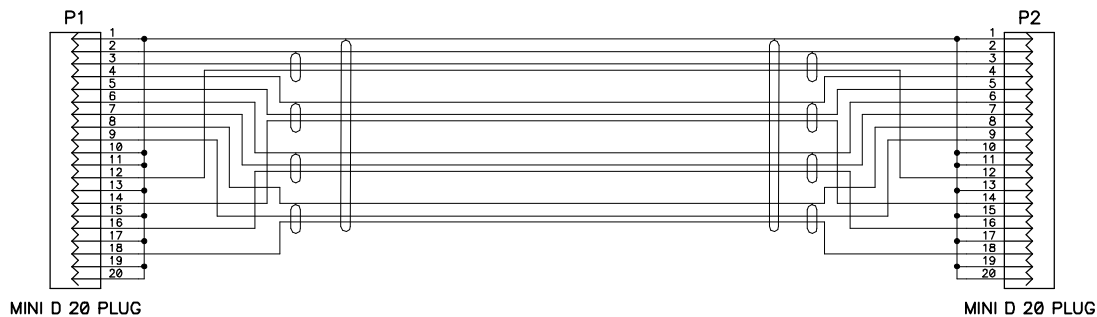


P1
20 Pin MDR Plug Connector
with strain relief shell

P2
20 Pin MDR Plug Connector
with strain relief shell



MINI D 20 PLUG

MINI D 20 PLUG

SPECTRA_STRP SKEWCLEAR 4 pair, 24 AWG cable (165-2499-969)
or
SPECTRA-STRIP SKEWCLEAR 4 pair, 26 AWG cable (165-2699-958)
or
SPECTRA-STRIP SKEWCLEAR 4 pair, 28 AWG cable (165-2899-941)

P1 & P2 3M 10129-3000VE

Test cable for continuity and shorts

P1 PIN	Wire	P2 PIN
2	SHIELD -	2
12	SIGNAL -	12
3	SIGNAL +	3
4	SHIELD	4
14	SIGNAL -	14
5	SIGNAL +	5
6	SHIELD	6
16	SIGNAL -	16
7	SIGNAL +	7
8	SHIELD	8
18	SIGNAL -	18
9	SIGNAL +	9
1	OUTER SHIELD	1
10	OUTER SHIELD	10
11	OUTER SHIELD	11
13	OUTER SHIELD	13
15	OUTER SHIELD	15
17	OUTER SHIELD	17
19	OUTER SHIELD	19
20	OUTER SHIELD	20

Los Alamos National Laboratory	
Title T&FC IN	
7 METER CLINK CABLE	
Size B	Date Originated: 7/29/200
	Date Last Revised: 11/08/200
LANL DWG # 105-0312	Approved By: R. Martin
PREPARED BY 105-0312-T&FC	Drawn by: G. Hill
Revised 105-0312-T&FC	Sheet 1 of 1