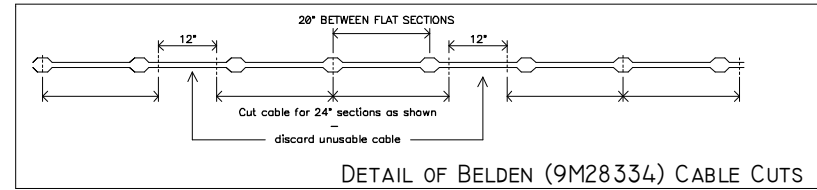
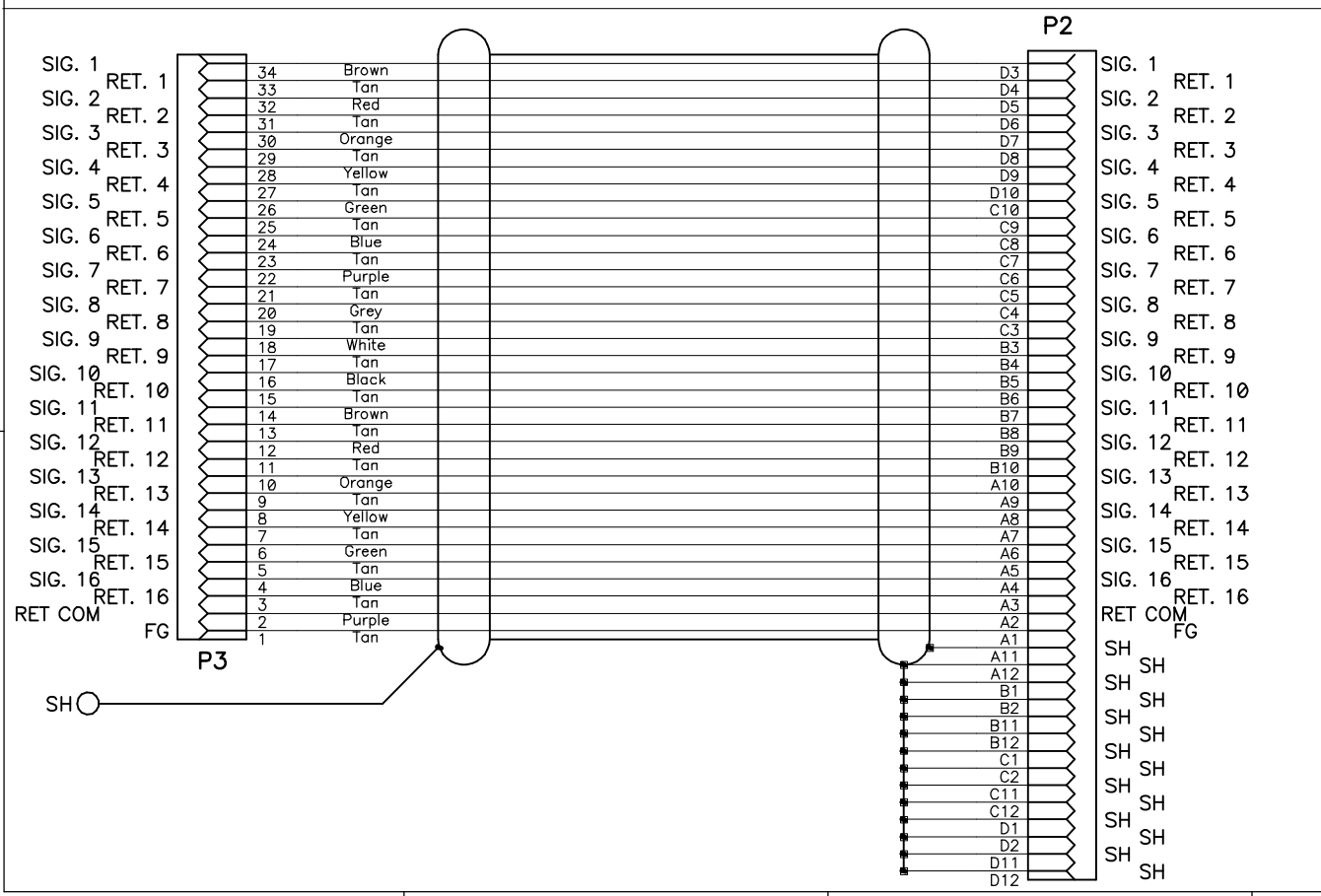
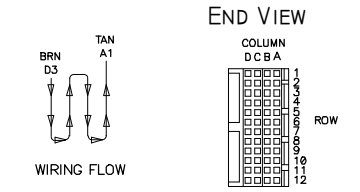
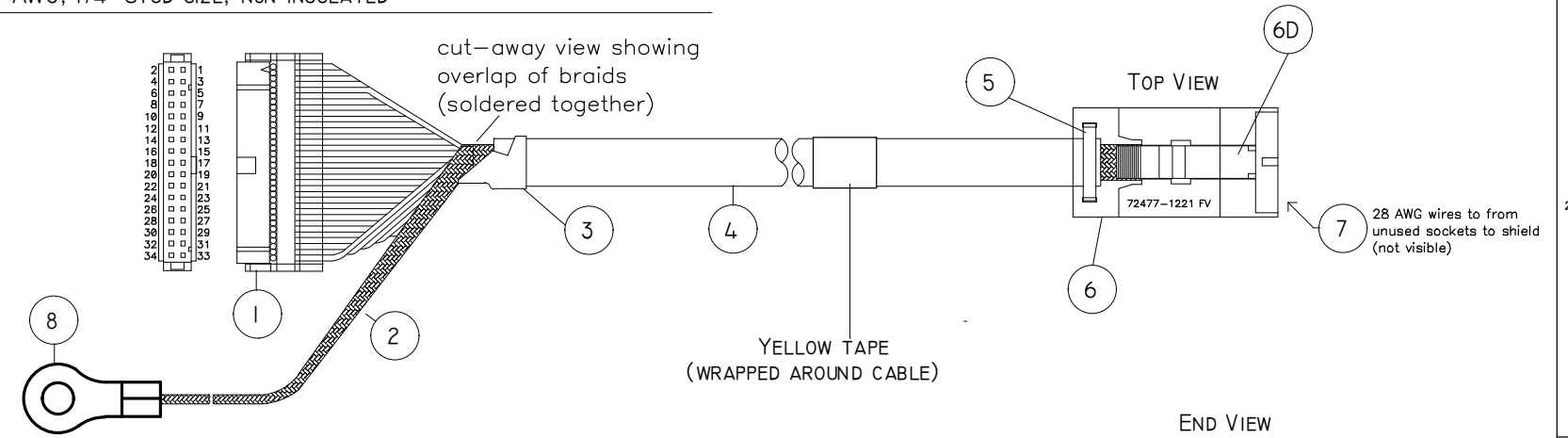
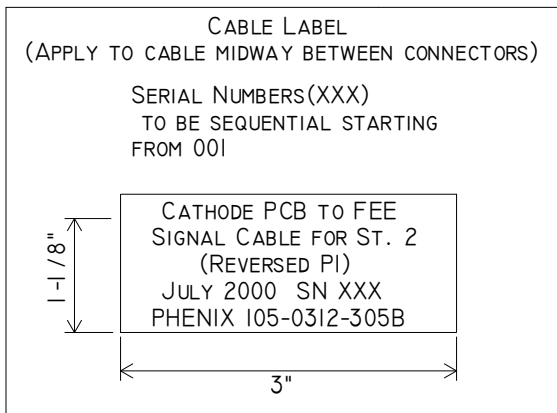
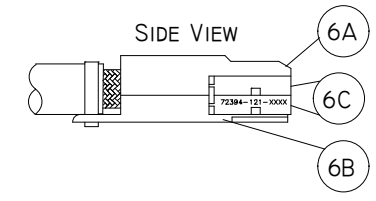


ITEM	QTY	MANUFACTURER	PART NUMBER	DESCRIPTION
1	1	FUJITSU	FCN-707B034-AU/B	IDC SOCKET CONNECTOR, 34 PIN, (500 CYCLES) 3 PIECES/CONNECTOR
2	7"	BELDEN	8669-250-0	SHIELDING/BONDING CABLE .5" ID (NEWARK 02F4322)
3	.65"	ALPHA WIRE	FIT-350-1/2	KYNAR HEAT SHRINT TUBING, CLEAR, UL STD. 224, 1/2" OD, 2:1 SHRINK RATIO
4	24"	BELDEN	9M28334	ROUND-FLAT CABLE, SHIELDED, 17 PAIRS, 28 AWG, (7 x 36), NEC CL2
5	1	PANDUIT	PLT.7M-C	CABLE TIE, 3.1" LONG, 18LB TENSILE STRENGTH, NYLON
6		BERG / FCI	72477-1221	4 x 12, 2 MM UNSHIELDED CABLE CONNECTOR KIT, .8UM AU PLATING, FOR 28-30 AWG WIRE
6A	1	BERG / FCI	72513-002	TOP COVER PIECE
6B	1	BERG / FCI	72513-001	BOTTOM COVER PIECE
6C	2	BERG / FCI	72394-122	DUAL ROW IDC SOCKET
6D	1	BERG / FCI	72389-001	EJECTOR TAB
7	14	ALPHA WIRE	299/2	WIRE, BUS BAR, BARE, 28 AWG, 1.6" LONG
8	1	AMP	35247	RING TERMINAL, FOR 8 AWG, 1/4" STUD SIZE, NON-INSULATED



Notes:

1. Cable is .050" pitch, which matches connector J1.
2. Connector J2 has 2mm pitch, and will be attached to round section of cable, so wires will need to be separated and individually terminated.

<b>Los Alamos National Laboratory</b>	
Title CATHODE TO FEE FOR ST. 2 & 3	
CABLE ASSEMBLY (REVERSED PI VERSION)	
Size C	Date Originated: 18 July 2000
	Date Last Revised: 18 July 2000
LANL DWG #	Approved By: Mischke
PHENIX DWG #: 105-0312-305B	Drawn by: G. Hart
Filename 105-0312-305B.pcb	Sheet of 1